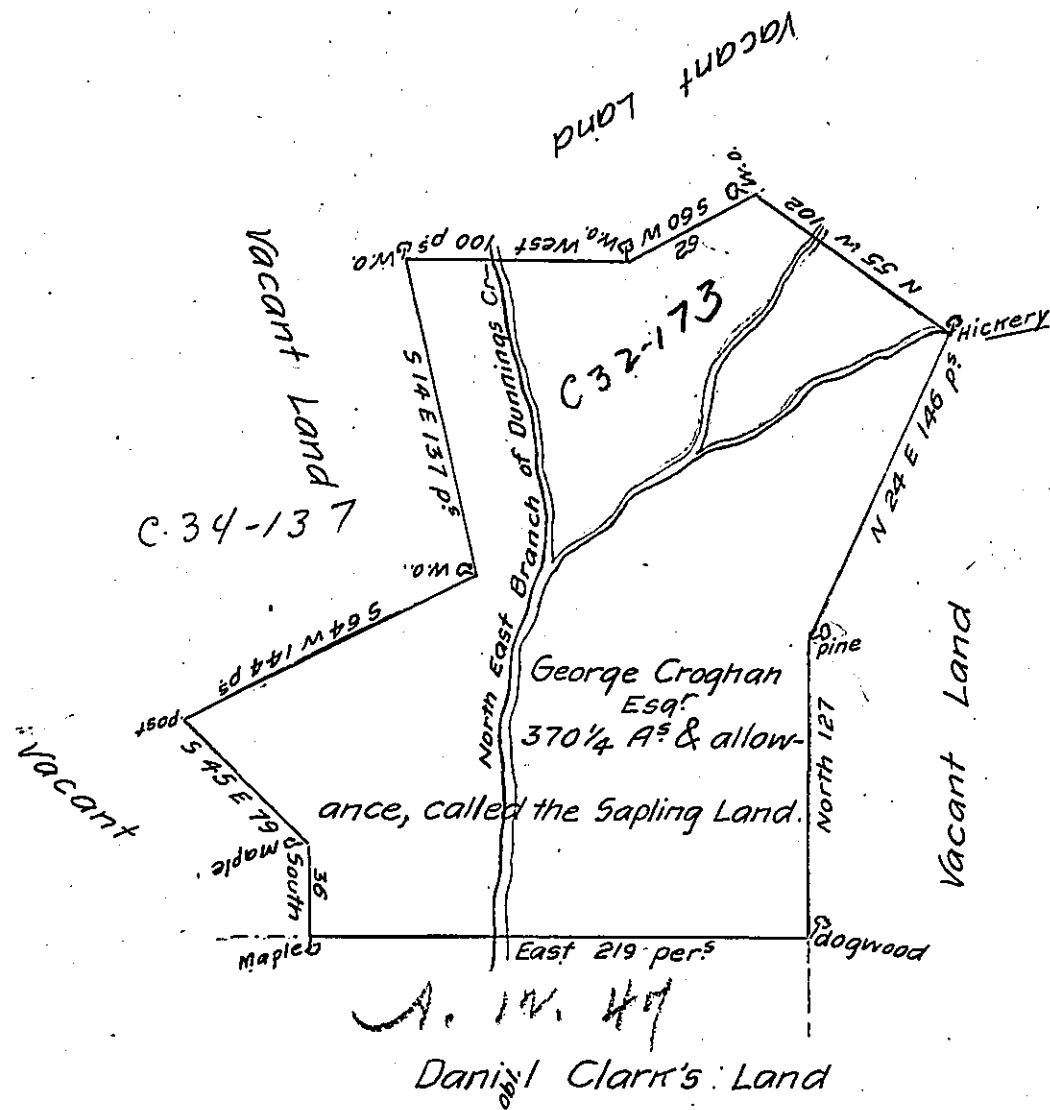


C-32-173



A Draught of a tract of land situate on the North East branch of Dunning's Creek in the County of Cumberland called the Sapling Land containing Three Hundred and seventy acres and a quarter and the usual allowance of six acres P.C. for roads &c. Surveyed for George Croghan Esq. in pursuance of a warrant dated the 3^d day of June 1763. To Jn^e Lukens Esq. P. Richard Tea Dep^y. Survey^r. Survey^r Gen^l.

IN TESTIMONY that the above is a copy of the original remaining on file in the Department of Internal Affairs of Pennsylvania, made conformably to an Act of Assembly approved the 16th day of February, 1833, I have hereunto set my Hand and caused the Seal of said Department to be affixed at Harrisburg, this eighth day of September 1904.

Joseph P. Brown
Secretary of Internal Affairs.